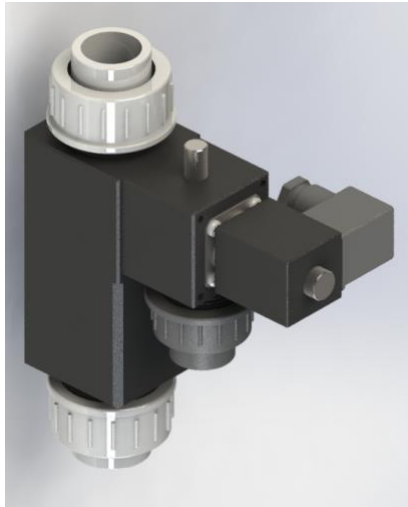


Power Pulse Venturi 1000L- Datasheet



Benefits Power Pulse Venturi

- 'Four-in-one' dosing solution
- Good mixing effect
- High reliability
- Compact installation
- Optimal price-quality ratio

Application

- Water treatment
- Mixing and dosing for industrial or agricultural systems

Function

- propulsion water flows in the main direction through a nozzle in the water jet pump. The nozzle ensures an acceleration of the water and therefore creates suction effect; the so-called venturi effect. This adds a second liquid (or gas) to the main flow.

Design

- The **Power Pulse Venturi** is based on a combination of various techniques that allow accurate dosing. The product consists of a water jet pump with a non-return valve, control needle and a solenoid valve (24 Vac +5%-0%). Standard equipped with EPDM seals.

- The passage in the nozzle with which the venturi is supplied is standard 3.0 mm. The venturi effect starts approximately between 2.0 and 3.0 mm. The intention is that you can drill the nozzle to the required diameter if desired. See the graphs as a reference.

Flow medium

- The Power Pulse Venturi can be used to mix other liquids (or gases) with the main flow. For sucking in aggressive substances such as acid, there is also an FPM version.

Nominal pressure

- Each valve is tested up to 4 bar. Above 4 bar, proper operation cannot be guaranteed.

Connection size

- The venturi block has a connection size of 5/4" BSP on the inlet and outlet. The suction block has a connection size of 1" BSP. Both blocks are supplied with the corresponding swivels and collar bush.

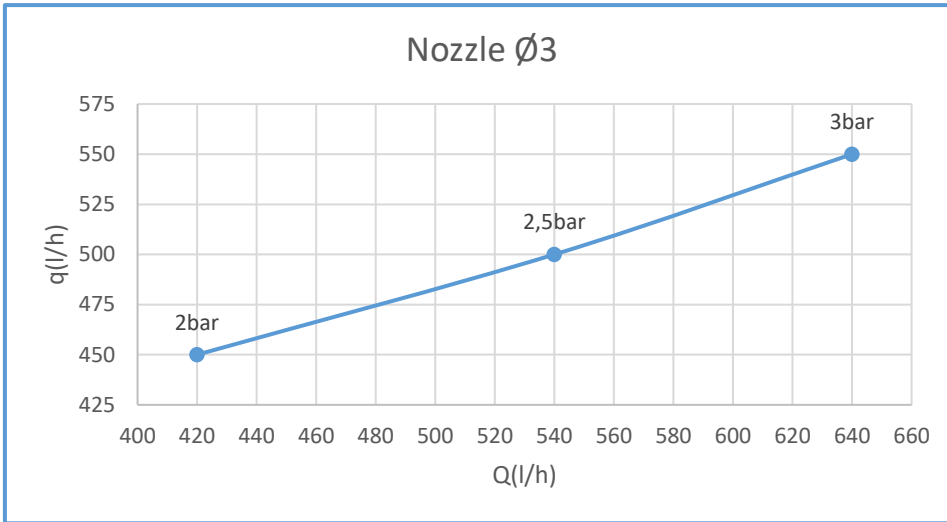
Flow direction

- The flow direction of the floating water (q) is indicated by an arrow on the side of the venturi. The connection position of the suction water (Q) channel can be adjusted by rotating the top block 90° or 180°. To this end, the 4 outer screws must be disassembled, after which the position of the suction channel can be determined.

Point of attention

For more info please call: +31 252 21 66 50 or mail: info@powerplastics.com

Characteristics



LEGEND

Q = suction water (l/h)
 q = floating water (l/h)

- The corresponding pressure on the floating water is indicated by the points on the line.
- The back pressure is equal to the atmospheric pressure and therefore

If desired, Power Valves can also assemble the complete dosing channels for you in a stainless steel frame;

